

Tumble dryer

TD6-7



Exceptional savings and effortless use



Priority on people

Certified ergonomic design with a human-centered approach for an outstanding user experience

- Lint filter
The horizontal filter drawer is positioned for easy access and cleaning without the need to bend down when stacked
- The display can easily be moved to the bottom of the tumble dryer for a better position when stacked



Long-term savings

Innovative features to save money and time, and embrace a sustainable lifestyle



Pure control

Monitor your equipment and performance from anywhere, allowing to take action and to improve your business with OnE Laundry - the personal assistant for hygiene validation management, process management and revenue management (optional)



Outstanding productivity

- Dry more laundry in less time: a game-changing improvement
- Reversing drum minimizes wrinkles and drying time to get an effective and even drying performance



Global Advanced Hygiene

Global Advanced Hygiene program package¹ with proven log 6 reduction^{II} disinfection of textiles through the laundry process, fulfilling the criteria of all local approved standards

- I. program is available in the standard library of gas and electric heated dryers, excluding products for specific segments where temperature is not controllable
- II. log 6 reduction equals to 99,9999% viral infectivity reduction. The efficacy of reduction of SARS-CoV-2 and other pathogens in the process is confirmed by RISE (The Research Institute of Sweden) on the basis of Electrolux Professional laboratory data

Other options

- Insulated glass door keeps the door cool on the outside and heat on the inside, so the room temperature is not affected
- Lagoon Advanced Care
- Door, front and side panels are available in stainless steel
- Connectable to booking-/payment system or coin meter
- Stacking kit
- Moisture Balance helps to stop the drying process at the right time to save on energy costs
- High altitude kit for gas heated tumble dryers



Images shown are a representation of the product only and variations may occur.

Main specifications		TD6-7			
Rated capacity, filling factor 1:18	kg / lb	7.5 / 16.5			
Rated capacity, filling factor 1:22	kg / lb	6.1 / 13.4			
Drum, volume	litre	135			
Drum, diameter	ø mm	575			
Heating alternatives:					
EI	kW	3.0 / 4.5 / 6.0			
Gas	kW / BTU/h	7.0 / 23900			
Consumption data ¹		EI 3.0 kW	EI 4.5 kW	EI 6.0 kW	Gas
Total time	Min	57	40	30	30
Energy consumption	kWh	3.11	3.11	3.04	3.67
Evaporation	g/min	54	78	104	101
Energy water evaporation	kWh/l	1.01	1.01	0.99	1.20

1. At rated capacity 1:22, 100% cotton load at 50% initial moisture dried to 0%.

Produced according to ISO 9001 and ISO 14001.

Certified with CB certificate for Low Voltage Directive and S-mark according to the Machinery Directive. Protection class IP X4D.

Electrical connections					
Heating alternative	Main voltage	Hz	Heating power kW	Total power kW	Recommended fuse A
Electric heated machines	220-240V 1-	50/60	3.0/4.5/6.0	3.3/4.8/6.3	16/25/32
	220-230V 3-	50/60	4.5/6.0	4.8/6.3	16/20
	240V 3-	50/60	4.5/6.0	4.8/6.3	16/16
	380-400V 3-	50/60	4.5/6.0	4.8/6.3	10/10
	415/440/480V 3-	60	4.5/6.0	4.8/6.3	10/10
Gas heated machines	220-480V 1/3-	50/60	¹	0.3	10
Machines with heat pump	220-240V 1/1N 3-	50/60	¹	2.3	10
	380-415V 3N-	50/60	¹	2.3	10

1. Total power and recommended fuse does not depend on the heating power in those cases.

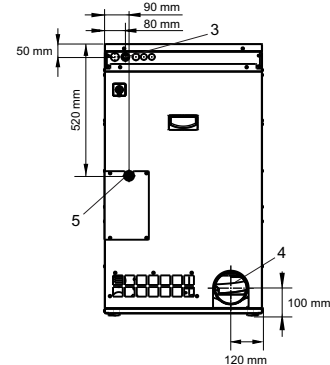
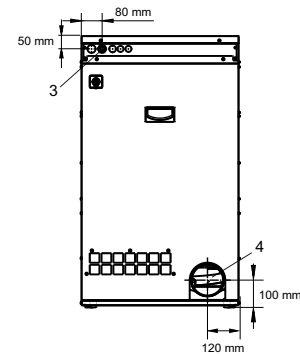
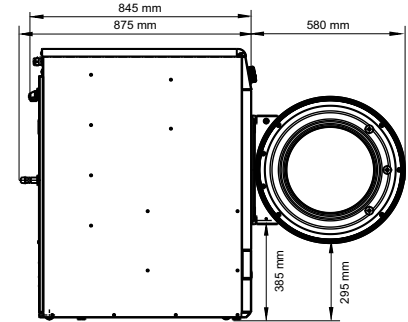
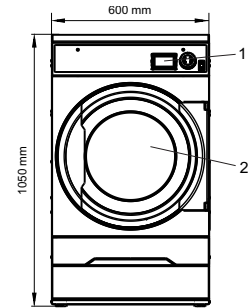
Gas and air connections ¹		TD6-7
Gas	ISO 7/1-R	1/2"
Gas pressure, Natural gas	Pa	2000
	mbar	20
Gas pressure, Propane	Pa	2800-5000
	mbar	28-50
Air outlet	ø mm	125
Evacuated air, electric, 3.0/4.5 kW	m ³ /h	150
Evacuated air, electric, 6.0 kW	m ³ /h	220
Evacuated air, gas, 7.0 kW	m ³ /h	280
Pressure drop, electric, 3.0/4.5 kW	Max. Pa	350
Pressure drop, electric, 6.0 kW	Max. Pa	270
Pressure drop, gas, 7.0 kW	Max. Pa	230
Sound levels		
Sound power/pressure level at drying ²	dB(A)	63/48
Heat emission		
% of installed power, max		15
Shipping data ³		
Weight	net, kg	109
Shipping volume	m ³	0.81
1. Operating panel		4. Exhaust connection
2. Door opening, ø 392 mm		5. Gas connection
3. Electrical connection		

1. The default gas appliances are built to run on either GNH or LPG gas where shall be installed at not over than 610 m (2001 ft) high altitude otherwise a kit for high altitude must be installed to the machine. For the kit No. please refer to the spare parts list.

2. Sound power levels measured according to ISO 60704.

3. Average data. Crated weight/shipping volume depends on configuration. Please contact logistics for exact measures.

Front and side panels in silver grey and door handle in dark blue (color samples can be ordered on part number 472998313).



Experience the Excellence
professional.electrolux.com