

# lagoon<sup>®</sup> Advanced Care

## Essential set

The perfect complement for any dry-cleaning operation

### Features and benefits

**Keep customers coming back**

Outstanding results for garments of every type thanks to specialized detergents and dedicated programs

**Delicate on the delicates**

Gentle on fine textiles and wools labelled dry-clean only, as less mechanical action. Woolmark-approved

**Rapid return on investment**

With a better loading factor, less prespotting, easier finishing and faster process times

**Sustainable and eco-friendly**

Water-based cleaning with none of the disadvantages of PERC, which can be dangerous to staff

**Dry to dry in 1 hour**

Smart chemicals and processes mean garments are fully dried in the dryer - no hang-dry



Main specifications				WH6-6LAC
Rated capacity, Laundry	Wool	filling factor 1:9	kg	6
	Wool	filling factor 1:15	kg	4
	Silk	filling factor 1:18	kg	3
Drum, volume			litre	53
	diameter		∅ mm	452
Extraction			rpm	1450
G-factor				530
Heating alternative	electricity		kW	4.4
<b>Consumption data "lagoon"</b>				
Total time	Wool High		min	22
	Wool Medium		min	23
	Silk		min	16
	Synth. mix Medium		min	20
	Synth. mix Low		min	17
Water consumption (cold+hot)	Wool High		litre	26
	Wool Medium		litre	25
	Silk		litre	25
	Synth. mix Medium		litre	26
	Synth. mix Low		litre	25
Energy consumption (motor/heating/water)	Wool High		kWh	0.05/0.25
	Wool Medium		kWh	0.05/0.25
	Silk		kWh	0.05/0.2
	Synth. mix Medium		kWh	0.05/0.3
	Synth. mix Low		kWh	0.05/0.25
<b>Consumption data ECO 60 1:9*</b>				
Total time			min	50
Water consumption (cold+hot)			litre	29+10
Energy consumption (motor/heating/hot water)			kWh	0.2/0.15/0.6
Residual moisture			%	45

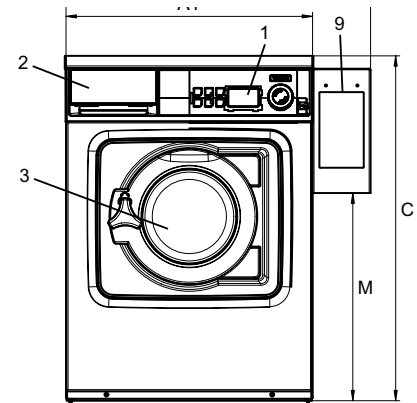
\* Water temperature 15°C cold water and 65°C hot water.

Main specifications				TD6-7LAC		
Rated capacity, Drying	filling factor 1:18		kg	7.5		
			litre	135		
Drum, volume			∅ mm	575		
				6.0		
Heating alternative	electricity		kW	6.0		
	gas		BTU/h (kW)	7.0		
	heat pump		kW	2.3		
<b>Consumption data "lagoon"</b>				El	Gas	Heat pump
Total time	Wool High*		min	23	23	36
	Wool Medium*		min	20	20	33
	Synthetic mix**		min	25	25	39
<b>Consumption data***</b>						
Total time			min	30.0	30.0	42.0
Energy consumption (motor/heating/hot water)			kWh	3.23	3.67	1.28
Evaporation			g/min	104	101	73
Energy/Water evaporation			kWh/l	0.99	1.20	0.42

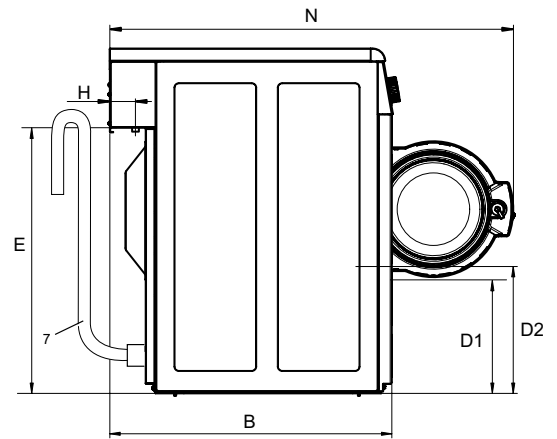
\* 1:30 load 100% wool load at 30% initial moisture dried to 0%.  
 \*\* 1:40 load 100% synthetic load at 20% initial moisture dried to 0%.  
 \*\*\* At rated capacity 100% cotton load at 50% initial moisture dried to 0%.

Electrical connections					
Heating alternative	Main voltage		Heating power kW	Total power kW	Recommended fuse A
	Hz				
Electric heated	220-240V 1N ~	50/60	2.2/2.8	2.4/3.0	16
	220-240V 1N ~	50/60	4.4	4.6	20
	220-230V 1N ~	50/60	4.4	4.6	25
	220-240V 3 ~	50/60	4.4	4.6	16
	220-230V 3 ~	50/60	4.4	4.6	20
	380-415V 3N ~	50/60	4.4	4.6	10
	380-415V 3 ~	50/60	3.6	3.8	10
Non heated	440V/480 3 ~	60	4.0/4.4	4.3/4.7	10
	110-480V 1/3 ~	50/60	-	0.5	10

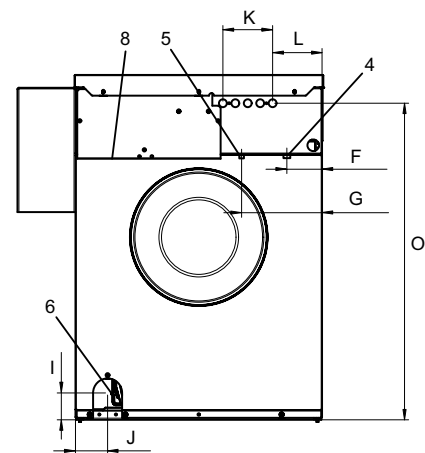
Water connections		WH6-6LAC
Water valves	DN	20
Water pressure	kPa	200-500
Capacity at 300 kPa	l/min	17
Drain pump	ø mm	20
Draining capacity	l/min	160
Liquid detergent supplies		5
Floor requirements		
Frequency of the dynamic force	Hz	24.2
Floor load at max extraction	kN	1.02 ± 0.3
Sound levels		
Sound power/pressure level at extraction*	dB(A)	70/56
Sound power/pressure level at wash*	dB(A)	56/42
Heat emission		
% of installed power, max		5
Shipping data**		
Shipping volume	net, kg crated, m <sup>3</sup>	100 0.46
Accessories		
Stainless steel fluff collector		x
Stacking kit with tumble dryer		x
Steel base		x
Dimensions in mm		
A1 Width		595
A2 Width		735
B Depth		680
C Height		830
D1		285
D2		310
E		640
F		85
G		195
H		50
I		65
J		80
K		120
L		120
M		500
N		975
O		765
1 Operating panel	6 Drain valve	
2 Detergent box	7 Drain pump	
3 Door opening ø 255 mm	8 Electrical connection	
4 Cold water	9 Payment system	
5 Hot water		



Front



Side view



Rear

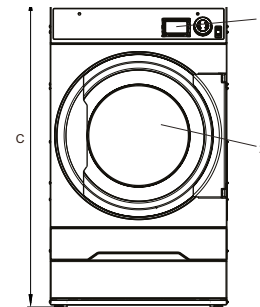
Front and side panels in silver grey and dark blue (color samples can be ordered on part number 472998313).

\* Sound power levels measured according to ISO 60704.

\*\* Average data. Crated weight/shipping volume depends on configuration. Please contact logistics for exact measures.

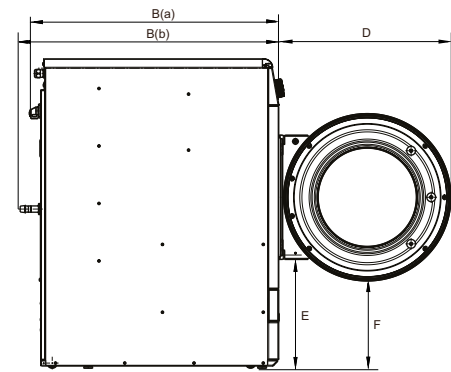
Electrical connections					
Heating alternative	Main voltage		Heating power kW	Total power kW	Recommended fuse A
		Hz			
Electric heated	220-240V 1 ~	50/60	6.0	6.3	35
	220-230V 3 ~	50/60	6.0	6.3	20
	240V 3 ~	50/60	6.0	6.3	16
	380-400V 3 ~	50/60	6.0	6.3	16
	415/440/480V 3 ~60	60	6.0	6.3	10
Gas heated	220-480V 1/3 ~	50/60	*	0.3	10

\* Total power and recommended fuse does not depend on the heating power in those cases.

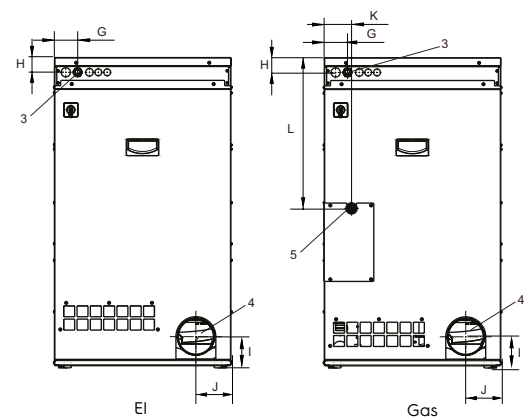


Front

Gas and air connections			TD6-7LAC
Gas	ISO 7/1-R		1/2"
Gas pressure	Natural gas	Pa	2000
		mbar	20
	Propane	Pa	2800-5000
		mbar	28-50
Air outlet		ø mm	125
Evacuated air,	el 3.0/4.5 kW	m <sup>3</sup> /h	150
		6.0 kW	220
		gas 7.0 kW	280
Pressure drop	el 3.0/4.5 kW	Max. Pa	350
		6.0 kW	270
		gas 7.0 kW	230
<b>Sound levels</b>			
Sound power/pressure level at drying*			
		dB(A)	63/48
<b>Heat emission</b>			
% of installed power, max			15
<b>Shipping data**</b>			
Weight		kg	109
Shipping volume		crated, m <sup>3</sup>	0.81
<b>Dimensions in mm</b>			
A	Width		600
B(a)	Depth, el		845
B(b)	Depth, gas		875
C	Height		1050
D			580
E			385
F			295
G			80
H			50
I			100
J			120
K			90
L			520
1	Operating panel		
2	Door opening ø 392 mm		
3	Electrical connection		
4	Exhaust connection		
5	Gas connection		



Left side



Rear side

Front and side panels in silver grey and dark blue (color samples can be ordered on part number 472998313).

\* Sound power levels measured according to ISO 60704.

\*\* Average data. Crated weight/shipping volume depends on configuration. Please contact logistics for exact measures.



For more information about Efficient Dosing System please refer to the EDS Product Data Sheet

Efficient Dosing System	230V / 50Hz	115V / 60Hz
EDS complete kit with 2 pumps	988916901	988916911
EDS complete kit with 3 pumps	988916902	988916912
EDS complete kit with 4 pumps	988916903	988916913
EDS complete kit with 5 pumps	988916904	988916914
EDS complete kit with 6 pumps	988916935	988916915
EDS Controller	988916937	988916937
EDS 24V Interface	988916941	988916941

Low level alarm		Description	PNC
Power supply	230V AC 50/60Hz	Low level alarm	988916610
Peak power absorbed	4W	Low level probe	988916611
Number of level sensor inputs	7 opto-isolated	LLA & 2 probes	988916612
Entry probes	Low voltage contact	LLA & 3 probes	988916613
Degree of protection	IP 65	LLA & 4 probes	988916614
Alarm output	Relay contact NA250V 8A	LLA & 5 probes	988916615
	max.	LLA & 6 probes	988916616

Electrolux Professional name and description	Packaging 20 litres	Packaging 10 litres
W01 - lagoon Sensitive Detergent Professional detergent for natural/animal fiber	432731085	432731086
W03 - lagoon Sensitive Conditioner Professional conditioner for natural/animal fiber	432731087	432731088
W02 - lagoon Delicate Detergent Professional delicate universal detergent	432731089	432731090

For further information including spotting agents, please refer to the lagoon detergent Product Data Sheet



**BASE; open front and sides with wheels**



Suitable for models: TD6-7LAC  
 988918477 Height: 370 mm  
 Material: Stainless steel  
 988918478 Height: 370 mm  
 Material: Galvanised, silver grey painted

**BASE; closed front and sides**



Suitable for models: WH6-6LAC  
 988918473 Height: 100 mm  
 Material: Stainless steel  
 988918474 Height: 100 mm  
 Material: Galvanised, silver grey painted

**BASE; closed front and sides with wheels**



Suitable for models: TD6-7LAC  
 988918475 Height: 100 mm  
 Material: Stainless steel  
 988918476 Height: 100 mm  
 Material: Galvanised, silver grey painted

**BASE; closed front and sides**



Suitable for models: WH6-6LAC  
 988918483 Height: 290 mm  
 Material: Stainless steel front and galvanised, silver grey painted sid  
 988918484 Height: 290 mm  
 Material: Galvanised, silver grey painted front and sides  
 988918485 Height: 290 mm  
 Material: Stainless steel front and galvanised, silver grey painted sid  
 Special version "floating foundation" - concrete filled  
 988918486 Height: 290 mm  
 Material: Galvanised, silver grey painted front and sides  
 Special version "floating foundation" - concrete filled

**STACKING KIT with or without base**



Suitable for models: WH6-6LAC with TD6-7LAC  
 988918479 Stainless steel stacking kit without the base  
 988918480 Galvanised, silver grey painted stacking kit without the base  
 988918481 + 988918473 Stainless steel stacking kit with the base included  
 988918482 + 988918474 Galvanised, silver grey painted stacking with the base included  
 988918481 Stainless steel stacking kit, when re-using existing base  
 988918482 Galvanised, silver grey painted stacking, when re-using existing base

