

Laundry dosing systems

Brightwell dosing systems are designed for hard-working commercial environments and are the most reliable, easy-to-use and resilient models on the market today. But don't just take our word for it – ask the thousands of global customers who use Brightwell dispensers every day.

Free Support: All products come with telephone support during European working hours and free training courses for our electronic equipment are available on request.

Brand Promotion: Our dispensers offer excellent brand promotion opportunities, including the new option to promote your brand on dispenser-programming software – so clients will see your logo or contact details on the illuminated screens.

Highly Compatible: Our dispensers work with: tunnel machines; mechanically, card-reader and PLC-controlled machines; small wash extractors and large intelligent and non-intelligent machines that take loads of anything between 5kg to 100kg.



laundry dosing systems

BrightLogic Laundry

BrightLogic is such a flexible system that it's ideal for small on-premises laundries and large industrial operations alike. Need one chemical dosed at a higher volume than another? Our mixed pump version will do the job. What about connecting to 'intelligent' machines, whilst still being able to operate a manifold system and record pump-cycle information? You can with BrightLogic's 'relay mode'. All units are CE, RoHS and WEEE approved.

Standard Version Suitable for:

- Small to medium-sized 'non-intelligent' commercial washing machines
- Wash load of up to 35kg

Highflow Version Suitable for:

- Larger washing machines
- Wash load of between 35kg to 100kg



4 pump standard laundry system



formula select

benefits include -

Installation to any OPL or industrial machine, with up to 10 inputs. This includes tunnel machines, clock/mechanically/card reader/PLC controlled machines.

Diagnostic on-screen test mode that eradicates the need for costly test equipment. Now an engineer can monitor the signals from the wash extractor to the dispensers in real time and pinpoint exactly where the problem lies, saving time and money.

Safer handling of chemicals, thanks to 3 manifold outputs and integral safety stops to prevent the risk of cross-contamination of alkaline, acid and neutral chemicals. An alarm also sounds if no water is present, but can be snoozed for 30 minutes with a button press.

More security and less hassle as the Prime, Pump-Stop and View modes can be disabled.

Absolute control of flow is also be available thanks to the speed control on all the pumps, which enables one pump system to suit all your needs



5 pump mixed laundry system



6 pump highflow laundry system

laundry dosing systems



easy upgrades

BrightLogic makes automatic laundry dosing so easy, you'll wonder how you ever managed before. Key features for easy operating:

- New design means pumps can be added or removed in seconds. Simply clip on a new pump, plug in the cable and you're ready to go.
- New cable management system allows easy access to the user-friendly PCB board.
- Easy-to-use touchpad interface on all units, with multilingual operating and the option to pre-programme security access codes.

And that's not all. The clever BrightLogic system features a whole host of new features and improvements designed to make chemical dosing easier than ever before. At the heart of BrightLogic is a smart new pump arrangement that allows ultra-fast tube replacement, reducing time and waste. The new design considerably lessens wear-and-tear on the units, making your investment last much longer.



illuminated screens



The clever design features are endless:

- Illuminated screen, for clearer programming.
- New BrightChem super chemical-resistant tubing available with all units.
- Full speed control on all pumps (including highflow), for more accurate, flexible chemical dosing.
- Small pumps – big flow. Increased flow rates mean bigger laundry machines can now be serviced by small pumps.
- Brushless, low-voltage motors mean more precise dosing, longer unit life and fewer spares.



print your logo

laundry dosing systems

BrightLogic laundry

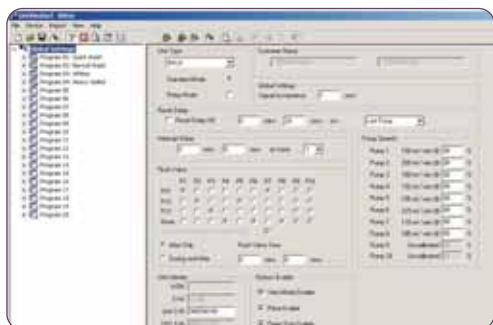
A simple, affordable software solution providing total control

As it controls up to 10 pumps, up to 20 programs and up to 10 separate inputs, it can be complex to program or retrieve data from the BrightLogic Laundry Systems using the on board display.

While other laundry systems offer expensive computerised control solutions, BrightLogic makes it simple and affordable.

Thanks to the PC software, you can assume total control of your BrightLogic unit with connection to your laptop. The software is available as a free download from our website -

www.brightwell.co.uk - simply contact us first for your installation password.



The unique wireless feature on the BrightLogic laundry system has been designed to make those awkward to reach units more accessible to programme.

Using a wireless dongle you can now control your units through a laptop. Simply find the machine you want, and connect using 2.4 GHz RF signals. (Windows operating system only)

Utilise every feature in the BrightLogic software to control up to 10 pumps and 20 programmes.



Alternatively you can connect the unit to your laptop computer using RS232 Serial COMMS.

Logic standard pump laundry units

power supply	90V to 265V AC, 50-60Hz, 1.48A (max), 133W (max)
current (@230V)	L4 - 0.18A, L6 - 0.31A, L8 - 0.44A, L10 - 0.57A
flowrate	6.4mm Silicone - 350ml/min (flowrate taken using water at 100% speed)
control circuitry	16x4 illuminated alphanumeric LCD display programming via 9 external keypad keys, security access code
motor	brushless - 24V DC, 600mA
enclosure	glass filled polypropylene
installation kit	available on request
approvals	EMC 89/336/EEC - EN61000-6-2:2005 EN61000-6-3:2007 LVD 72/23/EEC - EN60335-1:2002+A2:2006
dimensions (mm)	control box- H266 x W285 x D166 additional pumps- H186 x W140 x D166 logo - H40 x W40
weight (approx.)	control box - 2.3Kg, pump module - 1.1Kg

Flowrates calculated with water and silicone tube

Flowrates of the new BrightChem tube can be obtained on request

Logic highflow pump laundry units

power supply	90V - 230V AC, 50-60Hz, 4A (max), 360W (max)
current (@230V)	L2/H - 0.32A, L4/H - 0.64A, L6/H - 0.98A, L8/H - 0.13A, L10/H - 1.62A
flowrate	9.5mm Silicone - 1000ml/min (flowrate taken using water at 100% speed)
control circuitry	16x4 alphanumeric LCD display programming via 9 external keypad keys, security access code
motor	brushless - 24V DC, 600mA
enclosure	glass filled polypropylene
installation kit	available on request
approvals	EMC 89/336/EEC - EN61000-6-2:2005 EN61000-6-3:2007 LVD 72/23/EEC - EN60335-1:2002+A2:2006
dimensions (mm)	control box-H281 x W203 x D141 additional pumps- H227 x W156 x D132 logo H40 x W40
weight (approx.)	control box - 1.6Kg, pump module - 1.2Kg

Flowrates calculated with water and silicone tube

Flowrates of the new BrightChem tube can be obtained on request

laundry dosing systems



Low level alarm system capable of monitoring up to 10 chemicals. This system operates with BrightSense wands that constantly monitor drum levels and sound a buzzer when chemical is low. An external lamp/buzzer module is also available.

Suitable for 25ltr chemical drums
Maximum wand depth 470mm



power	230V AC, 50-60Hz, 2A, 460W
output	standard output to buzzer with optional external alarm module 'volt free' relay output - 250V, 2A max
control circuitry	microprocessor controller with variable 'snooze' period 'snooze' setting 1 - 120 minutes
enclosure	glass filled polypropylene
approvals	EMC 89/336/EEC - EN61000-6-2:2005 EN61000-6-3:2007 LVD 72/23/EEC - EN60335-1:2002+A2:2006
order reference	BrightSense10 channel alarm with sensors (specify quantity)

Our latest laundry manifold is constructed using a modular design and offers the choice of 2, 4, 6, 8 or 10 inlets. Each product inlet is fitted with a non-return valve to prevent the back flow of product. The inlet valves use components suitable for the majority of OPL products and provide excellent chemical resistance. Available with a flow or pressure switch, for increased chemical safety monitoring



power	24V DC, 0.3A, 8W
pressure	2 bar max
control circuitry	for use with BrightLogic laundry units
material	Glass filled polypropylene body and hoses, hastalloy springs and extreme Viton seals
options	8 or 10mm inlet hoses, 10 or 12mm outlet hoses, 240V AC Solenoid valve
dimensions (mm)	H120mm x W440mm x D85mm (6 input versions)
weight (approx.)	0.6kg (6 input version)
order reference	laundry manifold