

Washer extractor WB6-13



Exceptional savings and effortless use



Priority on people

Certified ergonomic design with a human-centered approach for an outstanding user experience

Compass Pro® microprocessor offers:

- Easy program selection
- Language selection
- Quick selection and option buttons for the most frequently used wash programs and options
- Large loading and unloading door for fast and easy operations
- Stainless and galvanized steel in all vital parts for high degree of rust protection



Long-term savings

Innovative features designed for lowest possible water, energy and detergent consumption, to save money and time, and embrace a sustainable lifestyle

- Automatic Savings weighs the linen and adjusts the water level to the amount of linen, saving water and energy at less than full load
- Power Balance measures, corrects the unbalance and adjusts the G force in real time, maximizing the dewatering, saving money and time in the drying process



Pure control

Monitoring of the status of the equipment and performance from anywhere, allowing to take action to improve the business

- Washers connectable to OnE Laundry, the personal assistant for hygiene validation, process management and revenue management



Images shown are a representation of the product only and variations may occur.

Main options

- Certus Management Information System (CMIS) to ensure traceability of the linen as per RABC (Risk Analysis and Bio contamination Control) standards
- Detergent box with four compartments
- Savings on chemicals with help of Efficient dosing, both ED peristaltic pumps and ED Venturi
- Titration valve for bath sampling
- Second display on unloading side for best process control and productivity
- Stainless steel body to better stand aggressive environments

Main specifications		WB6-13	
Rated capacity, filling factor 1:9	kg/lb	13 / 30	
Drum, volume	litre	130	
Drum, diameter	ø mm	650	
Extraction	rpm	910	
G-factor		300	
Standard heating alternatives	electricity, kW	13.0	
	steam	x	
Consumption data "Normal 60°C" (6H03)		El	Steam
Total time	Min	42	²
Water consumption (cold+hot)	litre	156+42	198+0
Energy consumption (motor/heating/hot water)	kWh	0.25/0/2.6	0.25/-
Steam consumption	kg	-	3.9

1. Water temperature 15°C cold water and 65°C hot water.
2. Depending on steam pressure.

Produced according to ISO 9001 and ISO 14001.
Certified with CB certificate for Low Voltage Directive and S-mark according to the Machinery Directive. Protection class IP X4D.

Electrical connections					
Heating alternative	Main voltage	Hz	Heating power kW	Total power kW	Recommended fuse A
Electric heated	200V 3~	50/60	9.0	9.3	35
	220-240V 1~	50/60	10.9-13.0	11.2-13.2	63
	220-240V 3~	50/60	10.9-13.0	11.2-13.2	35
	380-415V 3~	50/60	4.0-4.8	4.3-5.0	10
	380-415V 3~	50/60	10.9-12.9	11.1-13.2	20
Non heated/Steam heated	200V 3~	50/60	¹	1.3	10

1. Total power and recommended fuse does not depend on the heating power in those cases.

Water and steam connection		WB6-13
Water valves	DN	20
Water pressure	kPa	150-400
Capacity at 300 kPa	l/min	27
Drain valve	ø mm	75
Draining capacity	l/min	150
Steam valve	DN	15
Steam pressure	kPa	300-600
Liquid detergent supplies		5

Floor requirements		
Frequency of the dynamic force	Hz	15.2
Floor load at max extraction	kN	3.4 ± 0.5

Sound levels		
Sound pressure level ¹	dB(A)	73

Heat emission		
% of installed power, max		5

Shipping data ²		
Weight	net, kg	306
Shipping volume	m ³	1.84

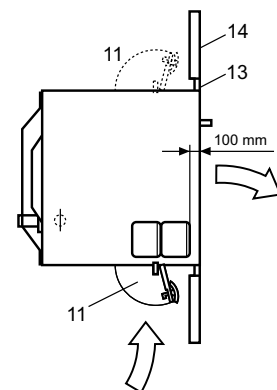
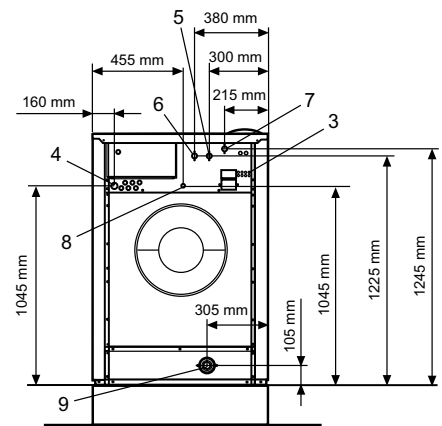
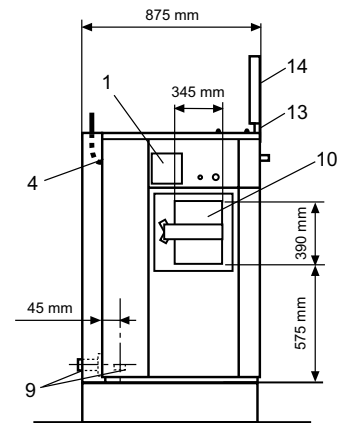
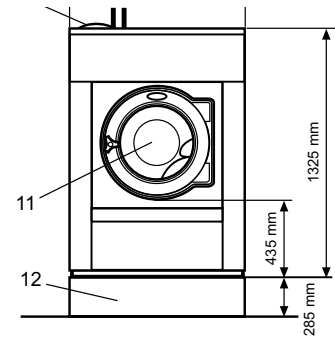
Accessories		
Steel base		x
Hose kits for water or steam		x
Extra I/O-board for additional detergent signals		x

- | | |
|----------------------------|--|
| 1. Operating panel | 9. Drain |
| 2. Detergent container | 10. Door opening, loading side: 280 x 280 mm |
| 3. Liquid detergent supply | 11. Door opening, unloading side: ø 395 mm |
| 4. Electrical connection | 12. Plinth |
| 5. Cold water | 13. Barrier frame |
| 6. Hot water | 14. Barrier partition |
| 7. Cold/hot water | |
| 8. Steam connection | |

1. Sound power levels measured according to ISO 60704.

2. Average data. Crated weight/shipping volume depends on configuration. Please contact logistics for exact measures.

Silver grey and dark blue color samples can be ordered on part number 472998313.



Experience the Excellence
www.electroluxprofessional.com