



Maytag Front Load Dryer

Maytag
MDE18MN
MDG18MN

OPL

Energy efficient dryer built to last

Trust the brand delivering laundry solutions for over 50 years.

TurboVent™ Dryer Technology

- Better performance on long vents
- High airflow reduces dry time

Easy to use

- Extra-large reversable side swing door
- Simple controls for multiple users
- Front access for easier self-service

Porcelain-Enamel Top

- Durable finish for high-use environments

9kg Super-Capacity Front Load Dryer

Maytag warranty 2 years Parts and 1 year labour.



Maytag Commercial Front Load Dryer MDE18MN / MDG18MN



Richard Jay is
Australia's largest
and most respected
supplier of Commercial
and Industrial laundry
solutions

Supplying Maytag
for over 30 years,
Richard Jay are the
Maytag experts

CYLINDER

Drum Volume	l	210
Capacity	kg	9

DIMENSIONS

Height	mm	1099
Width	mm	686
Depth	mm	743
Door Opening	mm	464
Weight (net / gross)	kg	63.5 / 69.8

SPEED & AIRFLOW

		Gas	Electric
Tumble Speed	RPM	50	50
Airflow	CMM	6.5	6.1

ENERGY

Motor Power Consumption	HP (W)	0.33 (250)
Heater Element Rating	W	4600
Total Energy per Cycle	Kwh	

NOISE & CYCLE TIME

Noise Level	dB	
Default Programme Duration	min	

EXTERNAL FINISH

Drum	
Top Plate	Porcelain-enamel

CIRCUIT PROTECTION

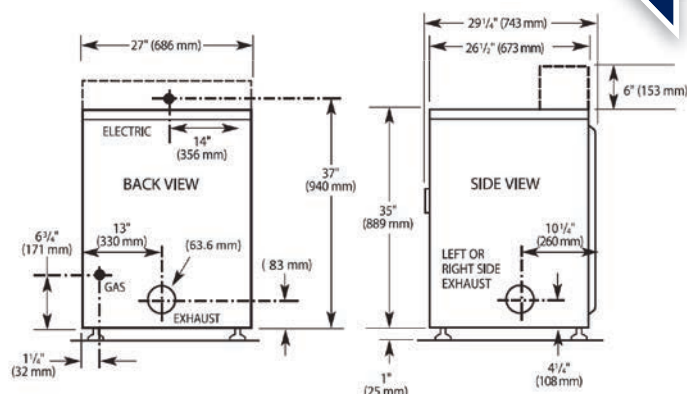
Main Control Board Fuse (Gas)	amps	10 (220-240V / 50Hz)
Main Control Board Fuse (Electric)	amps	20 (220-240V / 50Hz)

GAS

Inlet	inches	3/8 NPT
Rating	BTU(kcal)/hr	20000 (5040)

EXHAUST

Duct Diameter	mm	4"
---------------	----	----



MAX EXHAUST DUCT LENGTH PER NO. OF TURNS

	MAX EXHAUST DUCT LENGTH PER NO. OF TURNS	
	Box Hood & Louvered	Angled Hood
Rigid Metal Vent		
0 Turns	41.2m	39.3m
1 Turn	38.1m	36.3m
2 Turns	35.1m	33.2m
3 Turns	32.3m	30.5m
4 Turns	29.9m	28.0m
Flexible Metal Vent		
0 Turns	23.2m	18.9m
1 Turn	21.6m	17.4m
2 Turns	20.4m	16.2m
3 Turns	19.8m	15.6m
4 Turns	19.2m	14.9m



NSW & ACT 9 Grex Ave, Minchinbury
QLD 4/19 Success Street, Acacia Ridge
SA & NT 76 Pym Street, Dudley Park
VIC & TAS 31/640-680 Princes Highway, Brooklyn
WA Suite 10, 4/48 Winton Road, Joondalup



Richard Jay
Laundry Matters

1300 RICHARD (742 427)
www.richardjay.com.au

PRODUCT INSTALLATION SPECIFICATIONS

MODEL	MDE18MN
CAPACITY – kgs	9
HEIGHT – mms	1073
WIDTH – mms	686
DEPTH – mms	743
APPROX. WEIGHT – kgs	63.5
DUCT SIZE – inches (single skin round galv.)	4 - Elbow will use 200mm space behind machine.
MAKE UP AIR REQUIRED per dryer. The room where the dryers are located should have make-up air equal to or greater than the airflow of all the dryer in the room.	102 l/s
POWER CONNECTION	1 phase 240v 20amp GPO
CIRCUIT PROTECTION AMPS	20

* Customer supplied services must be located within 1 metre of each service connection point on machine for standard fittings to reach. See machine drawing for locations.

This work is protected by copyright. Reproduction in whole or in part, in 2 or 3 dimensions is expressly forbidden except with the prior written permission of the copyright owner. © Richard Jay Laundry Equipment Pty Ltd.

PRODUCT INSTALLATION SPECIFICATIONS

MODEL	MDG18MN
CAPACITY – kgs	9
HEIGHT – mms	1073
WIDTH – mms	686
DEPTH – mms	743
APPROX. WEIGHT – kgs	63.5
GAS CONNECTION – inches (dryer fitting is male)	3/8
GAS RATING – megajoules	21.10mj
NATURAL GAS - pressure required	1.13 – 2.0 kPa
LPG GAS - pressure required	2.75 kPa
DUCT SIZE – inches (single skin round galv.)	4 - Elbow will use 200mm space behind machine.
MAKE UP AIR REQUIRED per dryer. The room where the dryers are located should have make-up air equal to or greater than the airflow of all the dryer in the room.	109 l/s
POWER CONNECTION	1 phase 240v 10amp GPO
CIRCUIT PROTECTION AMPS	16

* Customer supplied services must be located within 1 metre of each service connection point on machine for standard fittings to reach. See machine drawing for locations.

This work is protected by copyright. Reproduction in whole or in part, in 2 or 3 dimensions is expressly forbidden except with the prior written permission of the copyright owner. © Richard Jay Laundry Equipment Pty Ltd.