

we care 

primus

laundry equipment

## High Spin Industrial Washer Extractors

### FS 23, FS 23 PRO



FS 23 COIN



FS 23 PRO



COMPACT DESIGN



SERVICE FRIENDLY



BIG DOOR  
OPENING

 Graphitronic®

 easySOAP

 POWERWASH

 liqui-mix

 superEco

 TRACE-TECH

#### FEATURES

- Freestanding, high spin
- Front and top panels from stainless steel (FS 23)
- Stainless steel cabinet (FS 23 PRO)
- Stainless steel drum and tub
- Graphitronic® - new graphic display with almost unlimited possibilities as:
  - Communication interface enabling remote service
  - Multilingual microprocessor
  - Freely programmable
- Large door opening (Ø42 cm) for easy loading and unloading
- Large drain valve (Ø76 mm)
- Easy access to all parts
- Liquid soap connections
- Frequency controlled motor
- Patented soap hopper and drain valve (Liqui-Mix® system)
- PowerWash® perforated lifting ribs: more mechanical action, lower water consumption
- Possibility to connect up to 6 inlets of liquid detergents - EasySoap®
- SuperEco washing programmes - significantly reduces water and electricity consumption

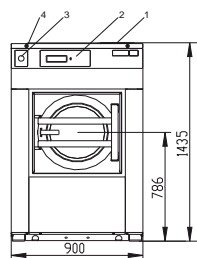
#### OPTIONS

- Stainless steel cabinet (AISI 304) (FS 23)
- SoftWash® version (**wet cleaning**)
- Liquid soap pumps
- Trace-Tech® traceability software and networking system
- Patented soap dispenser with four removable compartments on the front (FS 23 PRO)
- Coin operated machine with Easy Control microprocessor (FS 23)

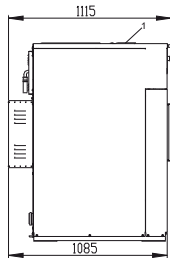
TYPE		FS 23	FS 23 PRO
<b>CAPACITY</b>			
Drum volume	l	220	220
Capacity	kg/lb	22/50	22/20
Drum diameter	mm	Ø750	Ø750
<b>MOTOR</b>			
Frequency controlled		standard	standard
<b>DRUM SPEED</b>			
Wash speed	rpm	42	42
Spin speed	rpm	915	915
G-factor		350	350
<b>PROGRAMMER</b>			
Graphitronic® microprocessor		standard	standard
Easy Control microprocessor		standard on coin version	-
<b>CABINET</b>			
Coloured side panels		standard	-
Stainless steel AISI 304		+	standard
<b>SAFETY FIXING</b>			
		4xM10	4xM10
<b>HEATING</b>			
100% hot water	°C	90	90
	°F	194	194
100% electrical	kW	18	18
Steam high pressure	bar	3-8	3-8
<b>CONNECTION</b>			
Electrical		1x220-240V 50/60Hz, 3x220-240V 50/60Hz 3x380-415V 50/60Hz, 3x380-415V+N 50/60Hz 3x440-480V 50/60Hz	
Water inlet	inch	3/4"	3/4"
Steam inlet	inch	1/2"	1/2"
<b>DIMENSIONS</b>			
HxWxD	mm	1435x900x1115	1625x900x1150
<b>TRANSPORT DATA</b>			
Gross weight	kg	690	750
Net weight	kg	650	670
Packing volume	m <sup>3</sup>	1,9	2,5
Packing dimension HxWxD	mm	1620x975x1200	1920x1030x1280
<b>WATER CONSUMPTION</b>			
Cold and hot water per cycle*	l	149 + 37	149 + 37

+ = option, Standard = Standard execution, \* Tested in accordance of EN 604 56 norm  
The data concerning dimensions of machines include all extended parts

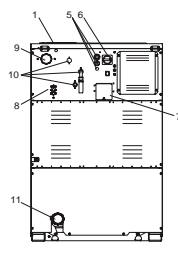
**FRONT FS 23**



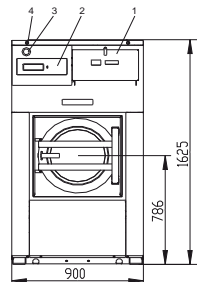
**SIDE FS 23**



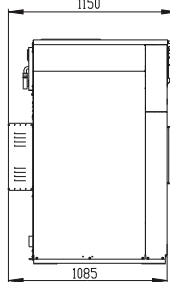
**BACK FS 23**



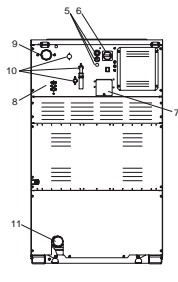
**FRONT FS 23 PRO**



**SIDE FS 23 PRO**



**BACK FS 23 PRO**



1. Soap hopper
2. Keyboard
3. Emergency stop
4. Key switch
5. Electrical connection
6. Main Switch
7. Electrical connection to liquid soap
8. Liquid soap pump connection
9. Air vent
10. Water connection
11. Drain valve

The company Primus preserves the right to change the machines and the specification in this leaflet at any time, without prior notice. Details and photographs are only for information and never binding.

[www.primuslaundry.com](http://www.primuslaundry.com)

ISO 9001  
ISO 14001  
BUREAU VERITAS  
Certification

